



South West NRM Ltd
*Achieving sustainable landscapes
for rural communities*

South West NRM

FloodWatch Project



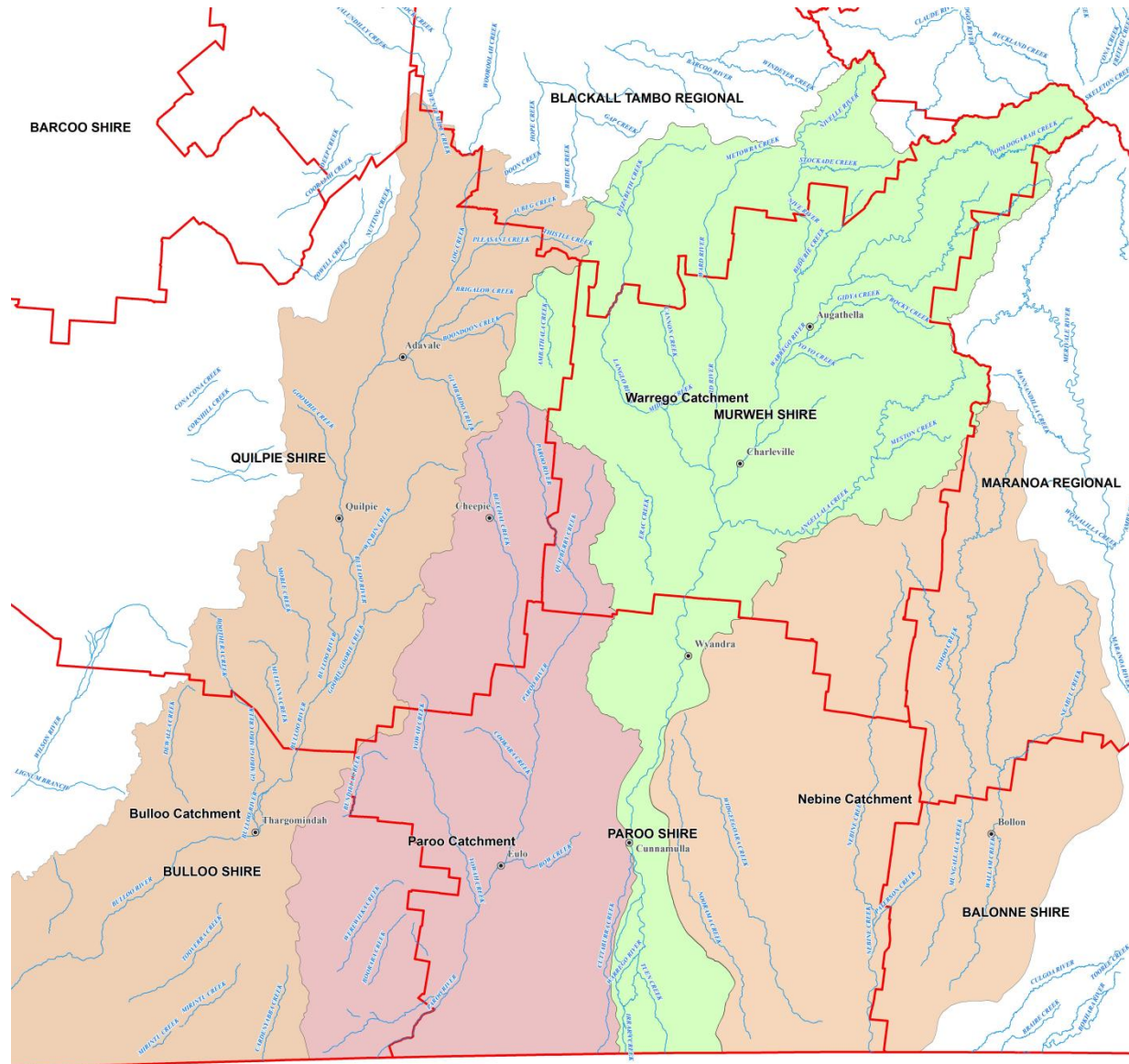
Project Outline

- Working with funds provided by State and Commonwealth Government as well as in kind contributions from local councils and South West NRM
- Key sites are being identified by councils
- Systems are designed to replace people at these sites
- The units make use of satellite or 3G connections to transmit images of flood height markers to a public website
- Project is scheduled for completion in December 2012



South West NRM Ltd
Achieving sustainable landscapes
for rural communities

Catchments and Councils





South West NRM Ltd
*Achieving sustainable landscapes
for rural communities*

Humeburn Site: 22/02/2012





South West NRM Ltd
*Achieving sustainable landscapes
for rural communities*

Humeburn Site: 23/03/2012





South West NRM Ltd
Achieving sustainable landscapes
for rural communities

Humeburn Site: 24/03/2012



Project Expectations

- During the dry season, photos only need to be taken on a monthly basis
- During a flood event, the image frequency will be increased to 4 times per day or more
- 3G modems will service areas with mobile phone coverage, and satellite systems will service remote areas
- Current images will be available via a public website, with an archive to view past images